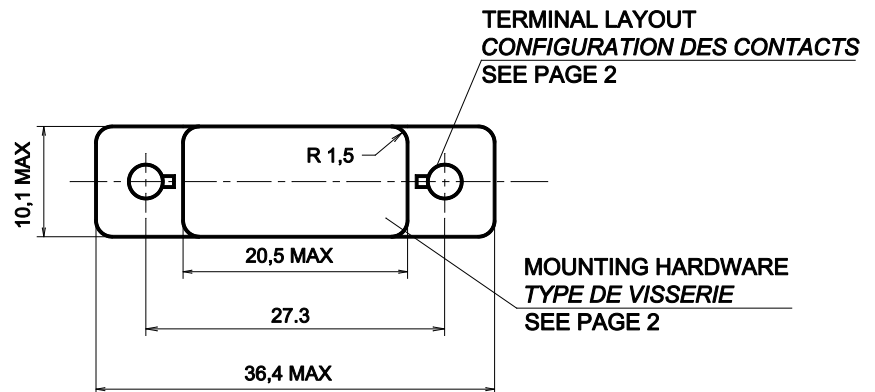


Applicable relays:
Series M210 (DC coil)



GENERAL CHARACTERISTICS CARACTERISTIQUES GENERALES

| | | |
|------------------------------------------------------------------------------------------------------------------------------|--------------------------------------------------------------------|-------------------------------------|
| Tooling #20 Outillage #20 | Crimp tool Pince à sertir | M22520/7-01 with turret M22520/7-12 |
| | Insertion and extraction tool Outil d'insertion et d'extraction | M81969/16-01 |
| Weight Poids | | 15g max. |
| Temperature range Température d'utilisation | | -70° C to +125° C. |
| In accordance to En accord selon | | MIL-DTL-12883/45 |
| Contacts and hardware delivered in a separate plastic bag Contacts et visserie livrés séparément dans un sachet plastique | | |
| Gasket sealed socket, crimp contacts Socle étanche par joint silicone, contacts à sertir | | |

LEACH INTERNATIONAL EUROPE S.A.S.

Tel: +33 3 87 97 98 97

Fax: +33 3 87 97 96 86

LEACH INTERNATIONAL ASIA PACIFIC

Tel: +852 2 191 3830

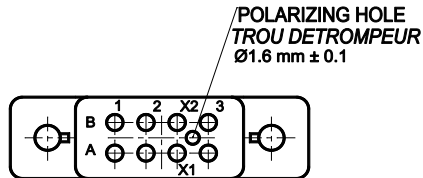
Fax: +852 2 389 5803

The technical information provided by Leach International Europe is to be used as a guide only, and is not meant for publication or as documentation for altering any existing specification. Dimensions are in millimeters unless otherwise specified. Rev. 06/2019.

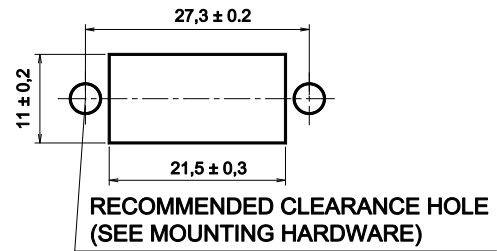
TERMINAL LAYOUT TYPE DE SORTIE

Dimensions in mm
Tolerances, unless otherwise specified, ± 0.25 mm

Series S210 Code A



MOUNTING HOLE LAYOUT DECOUPE DE LA STRUCTURE

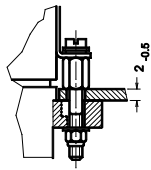


MOUNTING HARDWARE TYPE DE VISSERIE

CODE 0 WITHOUT HARDWARE

CODE 1 : 14 464 01 LOOSE STUD METRIC HARDWARE

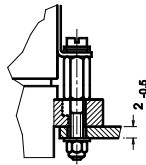
PANEL MOUNT HOLE : $\varnothing 3,5$



MOUNTING TORQUE
0,45 Nm $\pm 0,1$ Nm

CODE 2 : 14 464 02 LOOSE STUD METRIC HARDWARE

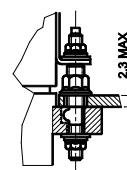
PANEL MOUNT HOLE : $\varnothing 3,5$



MOUNTING TORQUE
0,45 Nm $\pm 0,1$ Nm

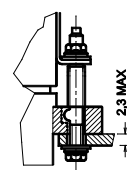
CODE 3 : 14 464 03 LOOSE STUD - UNC HARDWARE PER M12883/46

PANEL MOUNT HOLE : $\varnothing 4,4$



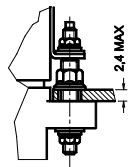
MOUNTING TORQUE
THREAD SIZE 2,8 : 0,45 Nm - THREAD SIZE 4,2 : 1,1 Nm

PANEL MOUNT HOLE : $\varnothing 3,5$



CODE 4 : 14 464 05 FIXED STUD - UNC HARDWARE PER M12883/46

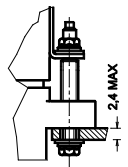
PANEL MOUNT HOLE : $\varnothing 4,4$



MOUNTING HOLE: 4,4 mm

MOUNTING TORQUE
THREAD SIZE 2,8 : 0,45 Nm - THREAD SIZE 4,2 : 1,7 Nm

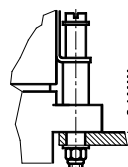
PANEL MOUNT HOLE : $\varnothing 3,5$



MOUNTING HOLE: 3,2 mm

CODE 5 : 14 464 06 FIXED STUD METRIC HARDWARE

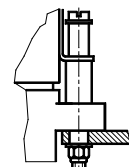
PANEL MOUNT HOLE : $\varnothing 3,5$



FOR RELAYS WITH CODE B TERMINALS
MONTING TORQUE 0,45 Nm

CODE 6 : 14 464 07 FIXED STUD UNC HARDWARE

PANEL MOUNT HOLE : $\varnothing 3,5$



FOR RELAYS WITH CODE C TERMINALS
MOUNTING TORQUE 0,45 Nm

GROMMET TYPE

TYPE DE JOINT D'ÉTANCHEITE

Wire sealing: A silicone grommet is permanently bonded to the wire entry face of the socket so as to provide sealing capabilities for AWG size 20 wire.

Etanchéité du fil : Un joint silicone fait partie intégrante du socle et permet de garantir une étanchéité des fils de AWG 20.

| CODE A | |
|----------------------------------------------------|------------------|
| External wire diameter / Diamètre extérieur du Fil | Dimensions in mm |
| Main contacts | 0,80 to 1,85 |

CONTACT SIZE AND STYLE

TAILLE ET STYLE DE CONTACTS

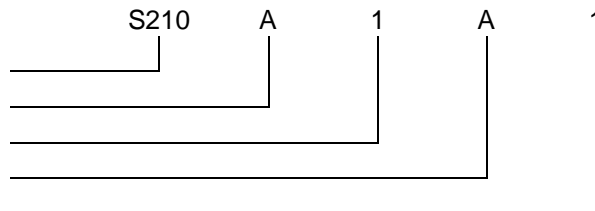
| CODE 0 | CODE 1 | CODE 4 |
|------------------|-------------------------------------------------------------------------------------------------------------------------------|---------------------------------------------------------------------------------------------------------------------------------------------------------|
| WITHOUT CONTACTS | <p>14 421 00</p> <p>MAIN CONTACTS CRIMP END TO ACCOMMODATE WIRE # 20 - 22 - 24</p> <p>CONTACT MATING END # 20</p> | <p>31 164 00</p> <p>MAIN CONTACTS (MIL-C-39029/101-553) CRIMP END TO ACCOMMODATE WIRE # 20 - 22 - 24</p> <p>CONTACT MATING END # 20</p> |

SOCKET NUMBERING SYSTEM

SYSTEME DE REFERENCES

Basic series designation | Référence de base

1. Terminal layout | Type de sorties
2. Mounting hardware | Type de visserie
3. Grommet type | Type de joint d'étanchéité
4. Contact size and style | Taille et style de contact



Exemple : S210-A1A1

NOTES

REMARQUES

1. Qualification and quality levels : Contact the factory
Niveaux de qualification et de qualité : Nous consulter.