

Applicable relays and sensors:
S400 for series M400 (DC Coil),
S401 for M401 (AC Coil),
S402 for M402 (DC Coil-latch),
S400, S402 for FLS402, T412,
S400, S402 for T441, VS400, CS400

GENERAL CHARACTERISTICS CARACTERISTIQUES GENERALES

| | | |
|--|--|--|
| Tooling #16 <i>Outillage #16</i> | Crimp tool <i>Pince à sertir</i> | M22520/1-01 with turret M22520/1-02 (Blue) |
| | Insertion and extraction tool <i>Outil d'insertion et d'extraction</i> | M81969/14-03 |
| Weight <i>Poids</i> | | 35g max |
| Temperature range <i>Température d'utilisation</i> | | -70° C to +125° C |
| In accordance to <i>En accord selon</i> | | MIL-DTL-12883/40 |
| Contacts and hardware delivered in a separate plastic bag <i>Contacts et visserie livrés séparément dans un sachet plastique</i> | | |
| Gasket sealed socket, crimp contacts <i>Socle étanche par joint silicone, contacts à sertir</i> | | |

AMERICAS.

Tel: +1 714-736-7599
<http://www.esterline.com/powersystems>

EUROPE.

Tel: +33 3 87 97 31 01
Fax: +33 3 87 97 96 86

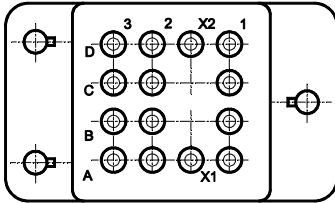
ASIA

Tel: +852 2 191 3830
Fax: +852 2 389 5803

TERMINAL LAYOUT TYPE DE SORTIE

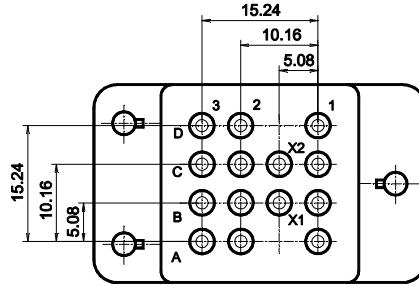
Dimensions in mm
Tolerances, unless otherwise specified, ± 0.25 mm

Series S400 Code A



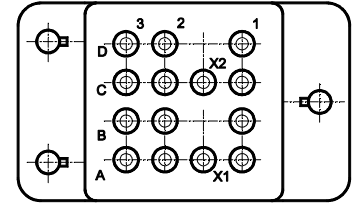
Applicable to M400 / T412

Series S401 Code B



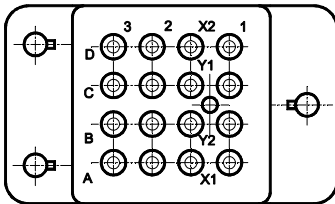
Applicable to CS400 / M401 Coil F and K

Series S401 Code C



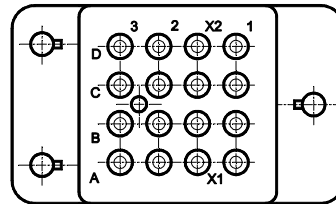
Applicable to M401 Coil E and J

Series S402 Code D



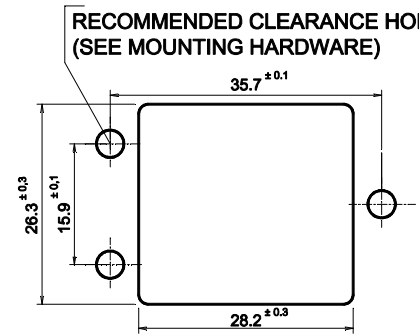
Applicable to M402 / FLS402 / VS400 / T441

Series S402 Code E



Applicable to FD400

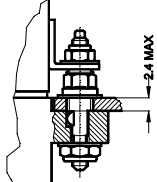
MOUNTING HOLE LAYOUT DECOUPE DE LA STRUCTURE



MOUNTING HARDWARE TYPE DE VISSERIE

CODE 1 : 05 284 12
LOOSE STUD
UNC HARDWARE

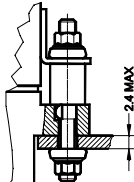
PANEL MOUNT HOLE: $\varnothing 5,3$



MOUNTING TORQUE
112-40: 0.45 Nm
190-32: 1.2 Nm

CODE 2 : 05 284 00
LOOSE STUD
METRIC HARDWARE

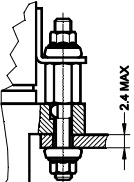
PANEL MOUNT HOLE: $\varnothing 3,5$



MOUNTING TORQUE
M3: 0.45 Nm

CODE 3 : 05 284 07
LOOSE STUD
METRIC HARDWARE

PANEL MOUNT HOLE: $\varnothing 3,5$



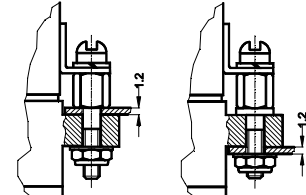
MOUNTING TORQUE
M3: 0.45 Nm

CODE 4
WITHOUT HARDWARE
HOLE DIAM 2.9 mm
FOR 112-40 SCREW

CODE 5
WITHOUT HARDWARE
HOLE DIAM 3.1 mm
FOR M3 SCREW

CODE 6 : 05 284 13
LOOSE STUD - UNC HARDWARE

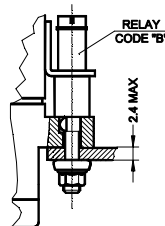
PANEL MOUNT HOLE: $\varnothing 3,5$



MOUNTING TORQUE
112-40: 0.45 Nm

CODE 7 : 05 284 15
LOOSE STUD METRIC HARDWARE

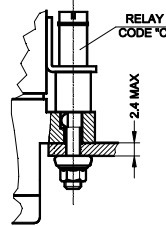
PANEL MOUNT HOLE: $\varnothing 3,5$



MOUNTING TORQUE
M3: 0.45 Nm

CODE 10 : 05 284 16
LOOSE STUD UNC HARDWARE

PANEL MOUNT HOLE: $\varnothing 3,5$

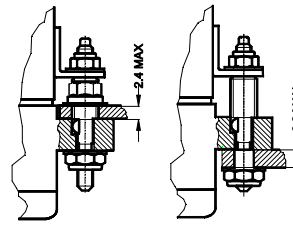


MOUNTING TORQUE
112-40: 0.45 Nm

CODE 8 : 05 284 20
LOOSE STUD - UNC HARDWARE

PANEL MOUNT HOLE: $\varnothing 5,3$

PANEL MOUNT HOLE: $\varnothing 3,5$

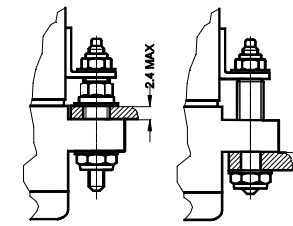


MOUNTING TORQUE
112-40: 0.45 Nm
190-32: 1.2 Nm

CODE 9 : 05 284 21
FIXED STUD - UNC HARDWARE

PANEL MOUNT HOLE: $\varnothing 5,3$

PANEL MOUNT HOLE: $\varnothing 3,5$



MOUNTING TORQUE
112-40: 0.45 Nm
190-32: 2.0 Nm

GROMMET TYPE

TYPE DE JOINT D'ÉTANCHEITE

Wire sealing: A silicone grommet is permanently bonded to the wire entry face of the socket so as to provide sealing capabilities for AWG size 16, 18 and 20 or 20, 22 and 24 wire as applicable.

Étanchéité du fil : Un joint silicone fait partie intégrante du socle et permet de garantir une étanchéité des fils de AWG 16, 18 et 20 ou 20, 22 et 24.

| External wire diameter / Diamètre extérieur du Fil | CODE A | CODE B |
|--|--|--|
| | Recommended for contact Code 2 and 8 Dimensions in mm | Recommended for contact Code 3 and 9 Dimensions in mm |
| Main contacts | 1.2 to 2.4 | 0.8 to 1.6 |
| X1-X2 Contacts | 1.2 to 2.4 | 0.8 to 1.6 |
| Y1-Y2 Contacts (S402) | 1.2 to 2.4 | 0.8 to 1.6 |

CONTACT SIZE AND STYLE

TAILLE ET STYLE DE CONTACTS

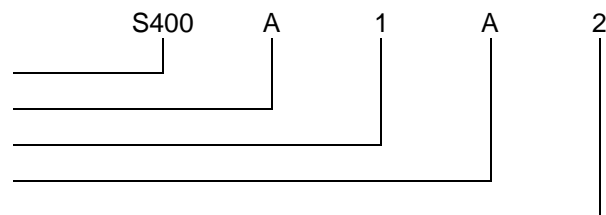
| CODE 0 | | | |
|---|---|--|--|
| WITHOUT CONTACTS | | | |
| CODE 2 | CODE 3 | CODE 8 | CODE 9 |
| <p>05 911 00</p> <p>MAIN CONTACTS CRIMP END TO ACCOMMODATE WIRE # 16 - 18 - 20</p> <p>CONTACT MATING END # 16</p> | <p>05 911 10</p> <p>MAIN CONTACTS CRIMP END TO ACCOMMODATE WIRE # 20 - 22 - 24</p> <p>CONTACT MATING END # 16</p> | <p>30 315 00</p> <p>MAIN CONTACTS (MIL-C-39029/92-533) CRIMP END TO ACCOMMODATE WIRE # 16 - 18 - 20</p> <p>CONTACT MATING END # 16</p> | <p>31 315 10</p> <p>MAIN CONTACTS (MIL-C-39029/92-534) CRIMP END TO ACCOMMODATE WIRE # 20 - 22 - 24</p> <p>CONTACT MATING END # 16</p> |

SOCKET NUMBERING SYSTEM

SYSTEME DE REFERENCES

Basic series designation | Référence de base

1. Terminal layout | Type de sorties
2. Mounting hardware | Type de visserie
3. Grommet type | Type de joint d'étanchéité
4. Contact size and style | Taille et style de contact



Exemple : S400-A1A2

MS/LEACH CROSS PART NO.
CORRESPONDANCE MIL/LEACH

| | MS - Number | LEACH P/N | CONTACTS TYPE | HARDWARE |
|------------------|-------------|-----------|--------------------|------------|
| MIL-DTL-12883/40 | 13S | S400-A8A8 | 14 x M39029/92-533 | Loose Stud |
| | 14S | S401-B8A8 | 14 x M39029/92-533 | Loose Stud |
| | 17S | S400-A8B9 | 14 x M39029/92-534 | Loose Stud |
| | 18S | S402-D8A8 | 16 x M39029/92-533 | Loose Stud |
| | 19S | S400-A9A8 | 14 x M39029/92-533 | Fixed Stud |
| | 20S | S401-B9A8 | 14 x M39029/92-533 | Fixed Stud |
| | 23S | S400-A9B9 | 14 x M39029/92-534 | Fixed Stud |
| | 24S | S402-D9A8 | 16 x M39029/92-533 | Fixed Stud |

NOTES
REMARQUES

1. **Qualification and quality levels : Contact the factory**
Niveaux de qualification et de qualité : Nous consulter.